

Haulout Rules and Information in 2026 - Introduction - Page 1 of 4

BBYC Haulout is for owners 'to carry out continuous work as weather permits'. Haulout is run totally by volunteers who give considerable time to help other BBYC members – use of Haulout is a privilege, not a right.

Cradles are loaned and allocated for specific periods to allow for maximum use by owners working on their boats. They cannot be occupied for long periods, as this prevents use by others. The Yard is not a safe place to avoid winter storms.

Owners are responsible to ensure they, their assistants and approved contractors follow the rules. These advocate safety, good practice and compliance with the Resource Consent under which we operate. All boat maintenance contaminants must be contained on site - hence the ban on most spray painting, sand blasting and rigid rules on noise. Any member of the Haulout team may approach you regarding site cleanliness.

If Rules are ignored BBYC will act to protect the operation of Haulout. Action may include loss of bond, doubling fees, extra charges, removing boats from Yard, banning future Haulout use or other sanctions at BBYC's discretion.

Others have an interest in the BBYC's Haulout Operation

The General Public: Haulout operates in an area used by the public for recreational purposes. Many are interested in what happens and the public provide constant scrutiny. They will not hesitate to take further action should we breach the Resource Consent conditions. Any controversial interaction between the public and those working in the Yard must be reported to the Haulout Committee as soon as possible.

The Bucklands Beach Yacht Club is not responsible for injury to persons using the Haulout area or loss of boat owner's property, including tools. Those entering and using the Yard must do so at their own risk.

Auckland Council: Under the Council's by-laws governing use of the Haulout Yard, we are not permitted to haul and store boats (other than a genuine emergency) outside the period of 1 May – 30 November in any year.

Fees: BBYC has a 'Cash before Splash' policy.

When ready to launch, Owner (Skipper) **must** advise Yard Coordinator (YC) by 1900 hrs on the previous Sunday. Your Invoice will be emailed Tuesday evening. If not received by then, contact YC. Invoice (and cradle fees) **must** be paid and received by BBYC in full by **Thursday 0900 hours**. If your payment does not show in the BBYC bank account, your launch will be cancelled. See also bottom of Page 2.

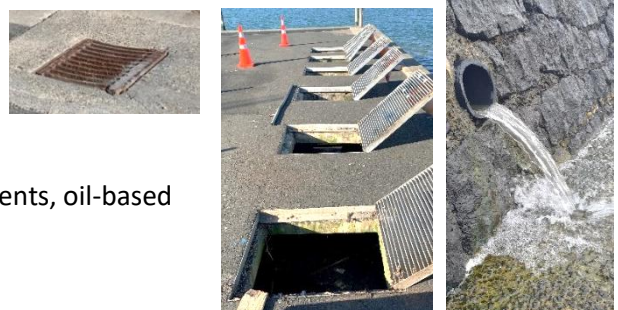
NOTE: *If weather or other events cause Haulout cancellation, you will be emailed an account for extra Yard time. Payment to be made as above.*

Haulout Fees 2026	To 30 June	From 1 July
Haul or Launch		
Below 9 metres	\$ 89	\$ 104
From 9 to 11 metres	\$ 118	\$ 136
11 metres and over	\$ 153	\$ 176
Utilities per week		
Monohulls		
Less than 8 weeks	\$ 76	\$ 90
Over 8 weeks	\$ 102	\$ 120
Multihulls		
Less than 8 weeks	\$ 132	\$ 152
Over 8 weeks	\$ 172	\$ 198
Cradle use	\$31	\$31

*** Environmental Protection and Water-flushed Sediment Tanks:**

The berm round the Yard directs flushed material towards **cast iron grills** [nearest photo]. Water and solids pass through six sediment tanks. Solids settle in the three northerly ones. The others use sand filters to remove remaining contaminants. Cleaned liquid flows into the sea from the most southerly tank. Solvents, oil-based liquids or waste must **never** enter the system.

Note: only Haulout Team may open sediment tanks.



Haulout Rules and Information in 2026 – (Page 2 of 4) – Hauling and Launching

Cradles: The boat's owner will provide or borrow a BBYC approved cradle capable of safely holding the boat and will be expected to assist with cradle preparation in addition to setting the cradle's correct measurements. If the cradle is considered unsafe, Haulout will refuse to haul a boat. The boat owner is responsible for ensuring the cradle is set up correctly and will hold the boat securely throughout the hauling operation and while in the Yard.

Cradles must be assembled at least twelve hours before hauling with the front of the cradle facing out.

Three ropes secure the boat in the cradle prior to hauling. The boat owner must provide three ropes (minimum diameter, 12 mm). Coil loose ends and fix securely to top of the cradle arms (collect later when in the cradle).

- **Ropes 1 and 2 - 'Horn Lines':** Attached correctly to cradle depending on your boat's length: refer to '**How to measure your boat and set up cradle**'. When boat is in cradle, attach end to cleat in cockpit. Check Horn Lines run in a straight line and are not snagged (bent around) on anything.

Horn Lines must be coiled neatly and firmly attached to cradle whenever boat is not in cradle

- **Rope 3:** Haulout ties this to the trolley. You must securely attach it to your bow cleat, with about 150 mm of slack.

Access requirements for Haulout's Trolley

Cradles must rest on four table blocks with a minimum height of 41 cm so Haulout's Trolley fits underneath. Each block must be a continuous nailed or glued unit (not loose timber). The cradle must be well braced and square with main bearers parallel. The bearers must be a minimum of 2.8 metres in length and clear of underside projections: *the trolley passes underneath*. Packers may only be used to level / adjust cockpit drainage angle when cradle and boat are in place.

Longitudinal keel guides must be fitted to cradles used for short or fin keel boats. The keel guides, approximately 200mm high, need to be bolted at each side of the centre beam at approximately 30 degrees from the vertical.

First Time and not-experienced Haulers: The Haulout video (on BBYC website) is **essential viewing** and shows how to enter the cradle using white (aft) and blue (fore) ropes. You are required to come to watch a Haulout operation before your haul and please expect to host on board a Haulout Team member, acceptable to the Foreman, for your haul. A permanent westerly (off-shore) set at varying velocity (greater on ebb) is experienced off the slipway.

Hauling: When your cradle is ready you will be told. You need to complete and sign Cradle Loan Agreement with Cradle Keeper. Yard Coordinator (YC) will advise by Wed/Thur of haul date, the time to be at the Pole. You **must** confirm receipt, or advise cancellation, by Thursday evening. Read **Website, Stage 4**, view **video** and print '**How to enter cradle**' leaflet. Haulout's Team of volunteers will come out to help you *in their free time*.

On the Saturday: you **must** first come to Yard to fit the '**3 Ropes**' (above) to cradle in good time before departing to collect your boat from its mooring/berth. You **must** allow extra sea-time so you arrive at the Pole in good time. Take and monitor your mobile for any later instructions.

Permitted Crew: No child under 16 is allowed on board when hauling or launching. Skipper and crew can remain on board only until the boat first leaves the water or is about to launch. When the boat is secure, the Foreman will provide a ladder for Skipper and crew **either** to disembark **or** board. Nobody is allowed on board during movement in the Yard.

Water and wash down: Within 24 hours of hauling the boat's hull must be cleaned, all heavy fouling (weed, shellfish, and sea-growth) scraped off, collected and disposed of, away from the Yard. It may not be placed in the river or Council bins (rotting sea-life smells). After this, when waterblasting is finished, remaining slime and anti-fouling on the area is to be washed into the gutter and all the way to the nearest cast iron grill*. Water is laid on. Use tank (rain) water when possible. Water blasters may only be used in the designated area of the Yard and the boat must be fully curtained.

Launch Procedure: Haulout's Team of volunteers will come out to help you *in their free time*.

Timing is critical and you have two key parts to play, **(1)** making your payment on time (see above, page 1) and **(2)** having your crew assistant and bow line ready. If plans change for *genuine* reasons, you **must** let the YC know by 1700 hours on Friday. Failure in any **must** actions will lead to Bond forfeiture and/or banning from Haulout use.

Haulout Rules and Information in 2026 – (Page 3 of 4) – Safety in the Yard

The Haulout Yard includes all the sealed area in front of the Yacht Club and launching ramp at Granger's Point. Those using Haulout will take all practicable steps not to injure themselves or others in the Yard. The owner is responsible at all times for the boat's safety and those working on the boat. All due care must be exercised. Do not work if you feel dizzy, tired, or are prone to losing your balance easily. The Yard is an **active Work Site** and be aware of hazards including:

- Slippery ramps and slippery launching areas
- Inhaling vapours and dust
- Danger of falling from scaffolding, ladders and boats
- Working in windy or stormy conditions – the Yard is exposed to SW, W and NW weather.
- Lifting heavy items
- The boat's stability in the cradle
- Walking into 'newly, just arrived' hazards

In the Yard, ladders are used either for access, or for working. Is your ladder suitable?

Inspect ladder before use. Aluminium ladders are recommended.

Wooden ladders and rungs can split or rot.

Read and follow the ladder's labels and markings.

Avoid electrical hazards – look overhead for power lines before handling the ladder.

Do not exceed the maximum load rating for the ladder.

Access Ladder

An access only ladder must be tied securely at top and bottom to prevent movement.

In the illustration [top right], thick red lines show where ladder must be tied to cradle: *cradle is not shown for clarity*. If ladder cannot be tied, ask a second person to hold (anchor) the foot of the ladder when in use. If unfolded to gain height, ensure stay bars are locked in place.

Position ladder on a hard, stable and level surface:

- so the ladder's side rails extend a metre above the boat's deck or cradle
- preferably resting against a cradle arm to prevent sliding sideways
- ideally below the shrouds / sidestays. Slide hands up the shrouds as you cross the lifeline

[second right, shrouds are arrowed – ladder ties not shown for clarity.]

Slope the ladder with a '**1 out, 4 up**' angle from a vertical surface.

Always use **3 contact points** (2 hands and 1 foot, or 1 hand and 2 feet) when on the ladder.

Do not carry 'equipment'. Use a rope to hoist or lower items needed.

Do not step on the ladder higher than deck level. Your weight can upset the ladder's balance.

It may then dislodge or slip off its support. You can further secure the ladder's base with sandbags.

Working on the hull will need a stepladder or scaffold

Working safely on the boat's hull in a cradle needs extreme caution. Always concentrate and be aware of your work environment. Equipment has limitations. Move carefully *when on deck*.

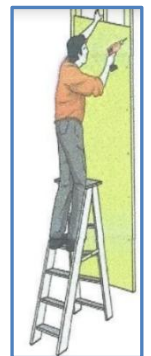
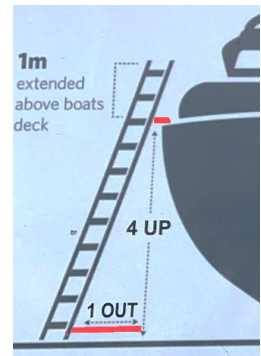
Stepladders (shaped 'A') (third right)

Position ladder on a hard, stable and level surface:

- steps facing work activity ('pointing in' to the boat, and not sideways to the boat)
- do not lean sideways and over-reach. You must move the stepladder.
- avoid standing on stepladder's top two steps: this makes it unstable and liable to tip over
- use a stepladder high enough for your work so you can avoid stretching upwards
- always use **3 contact points** (2 hands + 1 foot, or 1 hand + 2 feet) when on the ladder.

Scaffold / trestle (bottom right - stable, portable A frame, with planks) can be used.

Do not push away from the hull or step backwards.



Haulout Rules and Information in 2026 – (Page 4 of 4) – Security and Working in the Yard

Security:

- It is recommended that owners remove *items of value* from boats.
- Remove or securely padlock ladders to the cradle to deter unauthorised entry to your, or other, boats.

Waste and Rubbish

- All rubbish (including heavy fouling, shellfish and weed) **must** be collected from around the boat and removed from the Yard daily. This includes all rubbish in your designated area, irrespective of its origin. Failure to do so may prejudice your right to haul in the future.
- Paint remains and brush or roller washings may **never** be discharged into the sand filters, drains or other areas adjacent to the site. This would totally breach our Resource Consent and endanger our operation. Anyone doing this would be fined, charged a full commercial clean-up rate and denied future Haulout use.
- Prior to launching, all remaining rubbish **must** be removed from the Haulout Yard and area swept. The cradle must be removed from the Yard within 7 days of launching unless Foreman advises you otherwise.
- Strong westerlies and unusual wind patterns are increasingly common. Waste and contaminants can blow around and damage other boats, as can 'spray' from paint rollers. Strongly recommended to use a drop-cloth, down-wind, when conditions make this necessary.

Electricity: all power points around the Yard are isolated by RCD. You may **NOT** use them for arc welding.

Dry sanding: This requires an effective dust bag or vacuum cleaner. All dust, scrapings and debris must be retained within perimeter of the boat. The use of effective drop sheets is highly recommended. Vacuuming never removes residue totally and surface residue below your boat and the area next door will remain. To avoid waste damaging other boats, if dry sanding you must wash down the work area, plus adjacent Yard spaces, when finished. The waste must be flushed into the sediment tank*.

Wet sanding: All material removed by wet sanding must be flushed into the sediment tank*.

Noise is a major nuisance for residents.

- **Flapping halyards** are an ongoing problem. All halyards must be taut and tied well away from the mast. Furling headsails must be removed totally from the forestay. Sail covers must be secured to prevent flapping.
- **All noise** must cease by 6.30pm to comply with the Auckland Council's requirements.

Chemical paint stripping may be carried out providing the tarmac is covered and protected, all waste is contained and disposed of off-site (i.e. NOT flushed into drains, the sea or sediment tank*).

Spray painting: Airless spray painting of antifouling may only be carried out on a fully curtained boat during weekdays. All other spray painting is prohibited at all times.

HIABs or cranes being used on boats must be driven and positioned outside the yellow lines delineating the 9 tonne point load area over the Council's sewer surge tank which lies beneath the Haulout Yard.

Prohibited activities: Sand blasting, arc welding and cutting or grinding steel are **prohibited** in the Haulout Yard.

Tractor and Vehicles: Only designated tractor drivers may drive the BBYC tractor. Access to ramp and from the road must be kept clear at all times. The **no parking** signs must be observed, particularly during the Haulout operation. The speed limit in the Yard is 5 km per hour. Note: Yard access is denied after hours by a padlocked chain across entrance.
